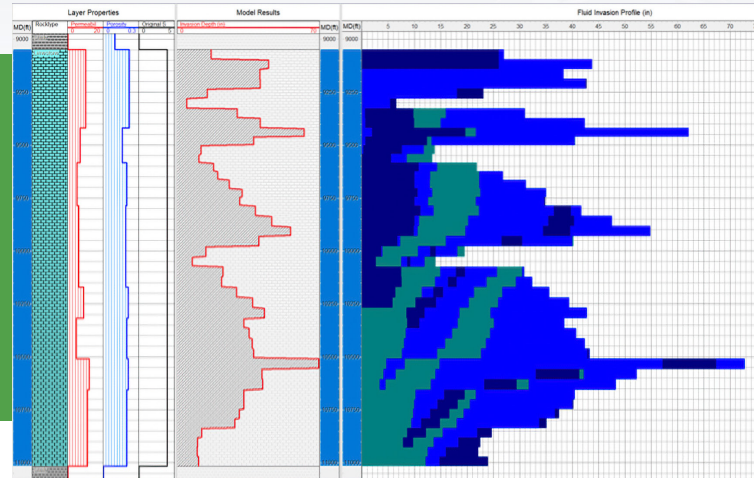


StimPro

Acidizing Design & Analysis

Precision Matrix Acidizing From Planning to Post-Job



OVERVIEW

Matrix acidizing can be complex—balancing fluid reactivity, thermal effects, varying lithologies, and mechanical limitations. *StimPro* delivers field-proven modeling and analytics for every step of the acidizing process. From candidate evaluation to job execution and post-treatment analysis, *StimPro* streamlines your acidizing design while helping optimize production performance and minimize treatment costs.

KEY FEATURES AND BENEFITS

■ Real-Time Monitoring & Optimization

Monitor injection pressure, skin evolution, and temperature changes live—recalibrate your strategy on-the-fly to improve treatment success.

■ Integrated Acidizing Diagnostics

Run transient pressure analysis, skin modeling, and treatment matching in one platform—gain deeper insights into formation response.

■ Unified Design, Analysis & Production Workflow

Design, simulate, execute, and history match—all in one interface. Align your treatment planning with post-job performance data.

■ Acid & Additive Libraries

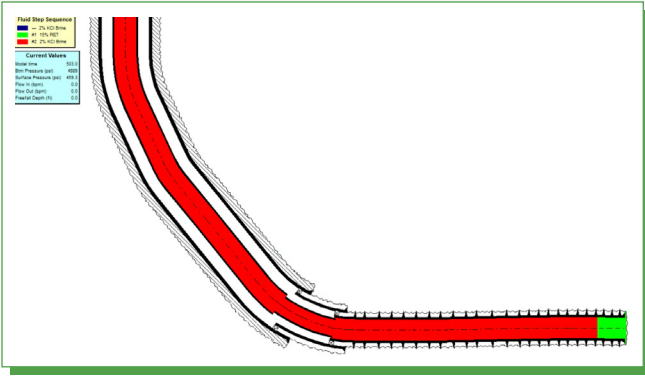
Select from preloaded acid systems, additives, and formation-specific reactions—accelerate planning and minimize design errors.

■ Advanced Lithology Modeling

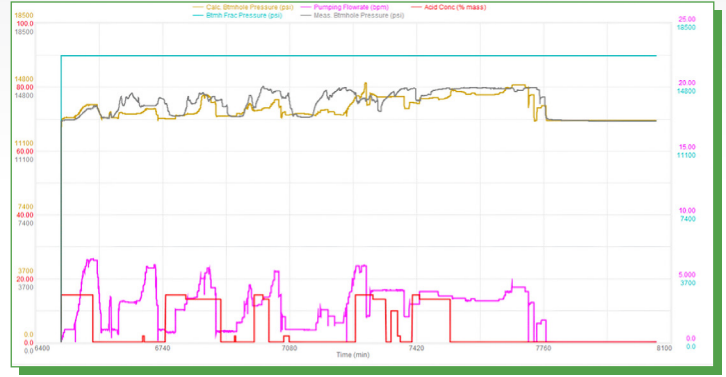
Simulate stimulation in carbonates, sandstones, and laminated formations—model fluid penetration, heat transfer, and reaction kinetics with high accuracy.

■ Treatment Monitoring with Paccaloni Plots

Visualize real-time pressure data and transient plots—detect inefficiencies early and fine-tune treatments for consistent results.



2D Schematic View



Pressure Match

APPLICATIONS AND CAPABILITIES

- **Carbonate Acidizing**—Optimize wormhole propagation and damage bypass.
- **Sandstone Acidizing**—Target fines, clays, and scale with custom acid blends.
- **Multi-Layered Reservoir Simulation**—Improve fluid placement through heat and reaction modeling.
- **Emulsion & Asphaltene Damage Mitigation**—Simulate solvent flushes and cleanouts.
- **Completion Tool Effects**—Include ICDs, perforations, and gravel packs.
- **Real-Time & Post-Job Matching**—Use live or historical data to refine models.

OPERATION MODES

- **Acidizing Design Mode**
Create treatment schedules based on damage types:
 - Emulsions and wettability change
 - Asphaltene and paraffin deposition
 - Perforation and gravel pack damage
 - Deep wellbore damage
- **Acidizing Analysis Mode**
Refine and monitor jobs in real-time; perform pre- and post-job evaluations and history matching.
- **Production Acidizing Mode**
Predict and assess well performance pre- and post-treatment using integrated reservoir simulation.

PRECISION STIMULATION STARTS WITH POWERFUL MODELING

Discover What StimPro Can Do—Schedule Your Demo Today

📍 2050 W Sam Houston Parkway S, Suite 1750, Houston, TX 77042, USA

📞 1-866-529-7479 ✉ sales@linqx.io 🌐 www.linxq.io



GET IN TOUCH

www.linxq.io

Copyright © 2025 LINQX. All rights reserved.