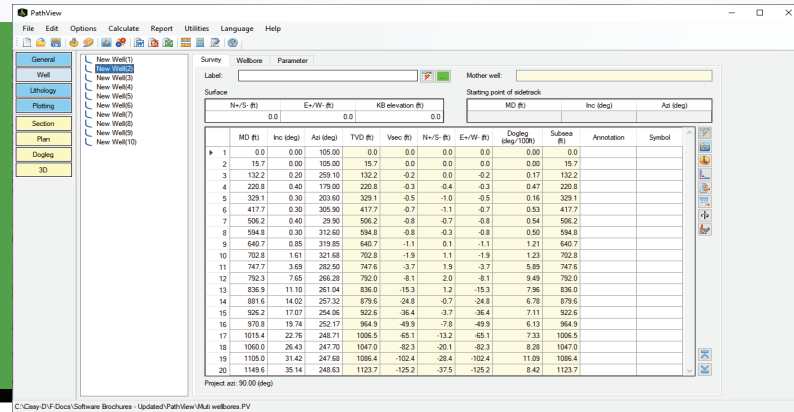


PathView Well Path Visualization

Plan multi-well developments with confidence



The screenshot shows the PathView software interface with a 'Wellbore' parameter window open. It displays two tables of well survey data. The first table is a 'Surface' table with columns: N-S (ft), E-W (ft), KB elevation (ft), MD (ft), Inc (deg), and Az (deg). The second table is a 'Subsea' table with columns: MD (ft), Inc (deg), Az (deg), TVD (ft), Vasc (ft), N-S (ft), E-W (ft), Dogleg (deg/100ft), Subsea (ft), Annotation, and Symbol. The data rows show wellbore parameters for 20 different wellbore segments.

Well Survey Data

OVERVIEW

Three-dimensional visualization of a wellbore trajectory has been challenging. However, calculations such as true vertical depth and dogleg severities and the ability to see well paths in a 3D workspace are important because they can help engineers visualize a development plan, avoid well collisions, and effectively present the plan to others.

By combining survey calculations with visualization technology, PathView provides an interactive, true 3D-rendered view of a single well, multiple wells, multilateral and multi-level sidetracks. The anti-collision feature accurately calculates the minimum distances across wells and graphically shows the distances in a 3D space. PathView brings well path visualization to a new level with options like 3-way projections, curved walls, various transparency, etc.

KEY BENEFITS

Improved Well Planning and Optimization

- Helps prevent costly wellbore interference by accurately calculating and visualizing minimum distances between wells.
- Offer versatile visualization options to suit different analysis needs.

Enhanced Communication and Collaboration

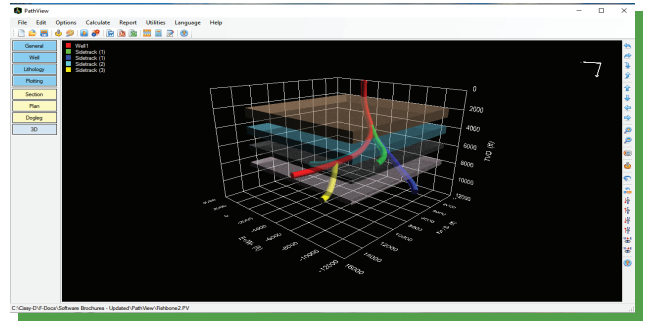
- Enables multiple users to work together on wellbore designs and analysis.
- Creates visually compelling representations of wellbore plans, facilitating communication with stakeholders.

Data Integration

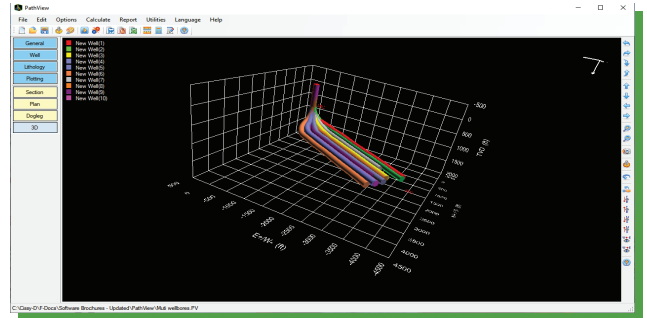
- By combining survey calculations with visualization technology, PathView integrates various data sources, making it easier to analyze complex drilling environments.

KEY FEATURES

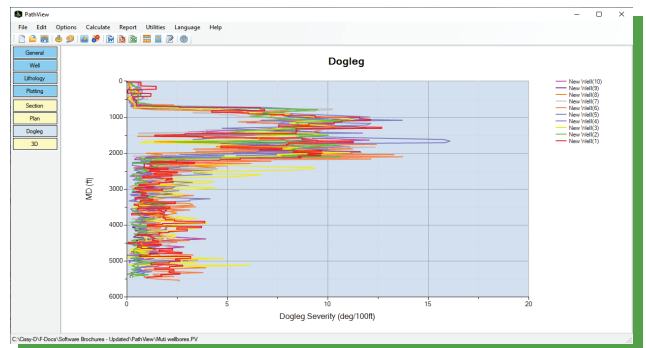
- True 3D-rendered wellpath visualization
- Anti-collision calculations
- Surface lease lines
- Formation lithology
- Survey import from Excel®, text or PDF® files
- Up to 5,000 rows of survey data
- Plots specified wellbore range
- Up to 10 sidetrack levels
- Plots and prints detailed well profiles
- Plan view, section view, 3D view, and dogleg
- Up to 5 kinds of parameters along the wellbore
- Up to 20 different wellbore sizes
- US oil field, SI, and customized units
- Microsoft Word®, Excel® and PowerPoint® reports



Drilling Formation Lithology



Well Path 3D Visualization



Multi-Well Dogleg View

ELEVATE HOW YOU PLAN AND ANALYZE WELL PATHS

Explore PathView—Schedule Your Demo Today

📍 2050 W Sam Houston Parkway S, Suite 1750, Houston, TX 77042, USA

☎ 1-866-529-7479 ✉ sales@linqx.io 🌐 www.linxq.io



GET IN TOUCH

www.linxq.io

Copyright © 2026 LINQX. All rights reserved.