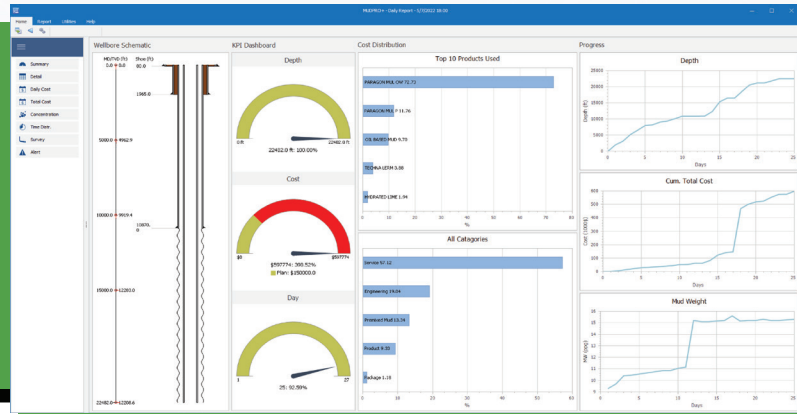


# MUDPRO Drilling Mud Reporting

Track mud properties, chemistry, and additives in one tool



Smart Mud Reporting and Data Management

## OVERVIEW

Mud is generally synonymous with drilling fluid. It is used in the rotary drilling process to clean the wellbore, carry out cuttings, exert hydrostatic pressure, and cool and lubricate the drill string and bit. If the drilling fluid does not behave properly, it may lead to many serious well problems, including well abandonment. Furthermore, the additives required to maintain the mud in good condition are quite costly.

Mud engineers are responsible for testing the mud at a rig, prescribing mud treatments, and maintaining mud weight, properties, and chemistry within recommended limits. They are also responsible for creating a mud report.

**MUDPRO** is a comprehensive solution that builds on the current MUDPRO capabilities. It integrates practical features such as pad drilling, multi-type rheology, AI data analysis, and more. The upgraded data structure significantly improves read/write speed. MUDPRO also enriches visualization in Output and Recap, with full customization available for all display contents.

## KEY BENEFITS

### Enhanced Efficiency and Accuracy

- Handles complex calculations like hydraulics and concentrations, reducing manual effort and errors.
- Improved data structure leads to faster data read/write speeds, saving time and increasing efficiency.
- Compatible with previous MUDPRO data.

### Improved Visualization and Customization

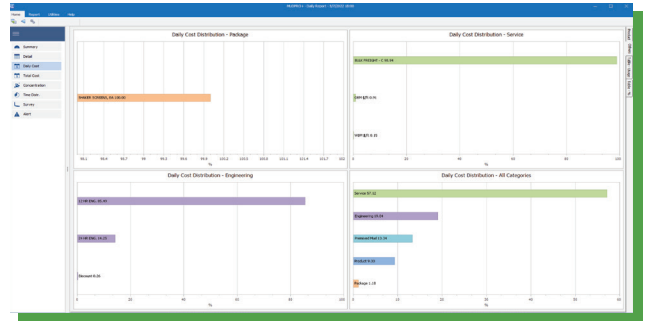
- Clear and customizable graphs and charts provide a better understanding of mud properties and trends.
- Tailored reports to focus on specific data points and insights.

### Improved Decision Making

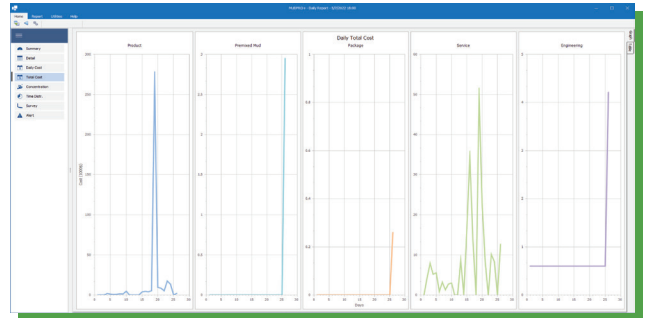
- AI-driven data analysis provides valuable insights into mud behavior and trends, enabling proactive decision-making.
- Accurate tracking of additive usage helps in cost control and preventing over-treatment.

## KEY FEATURES

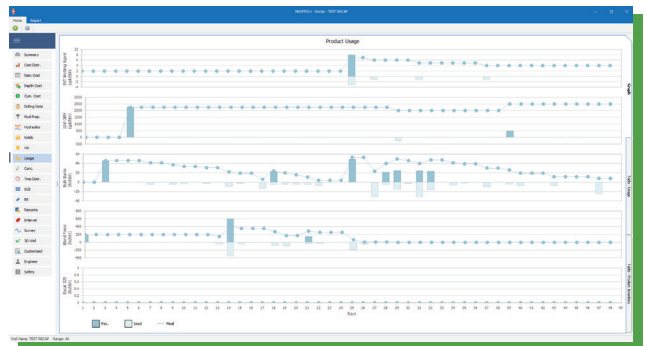
- Pad drilling
- Land and offshore well
- Riser operation with choke, kill, and boost lines
- Speedy data writing and reading
- Master products and tubular database
- Water-based, oil-based, and synthetic mud
- Solids analysis
- Salt type selection: NaCl, CaCl<sub>2</sub>, and dual salts
- Bingham Plastic, Power Law, and Herschel Buckley rheology models
- Hydraulics calculation
- Mud volume tracking
- Inventory, volume, and pit snapshots
- Product Reconciliation
- Concentration calculation in each pit
- Low inventory warning
- Receive/return BOL tracking
- Option to display report numbers by well or pad
- Customize recap review
- Recap summary
- Multiple daily mud report
- Automatically data backup
- US oil field, metric, and customized units
- WITSML report
- Export data to HYDPRO software
- One-page/two-page/three-page daily mud report
- Printing size: letter, legal or A4



Cost Distribution



Daily Cost Snapshot



Products Usage Tracking

**TURN DAILY MUD DATA INTO CONFIDENT DECISIONS**

See MUDPRO in Action—Schedule Your Demo Today

📍 2050 W Sam Houston Parkway S, Suite 1750, Houston, TX 77042, USA

📞 1-866-529-7479 ✉ sales@linqx.io 🌐 www.linxq.io



**GET IN TOUCH**

www.linxq.io

Copyright © 2026 LINQX. All rights reserved.